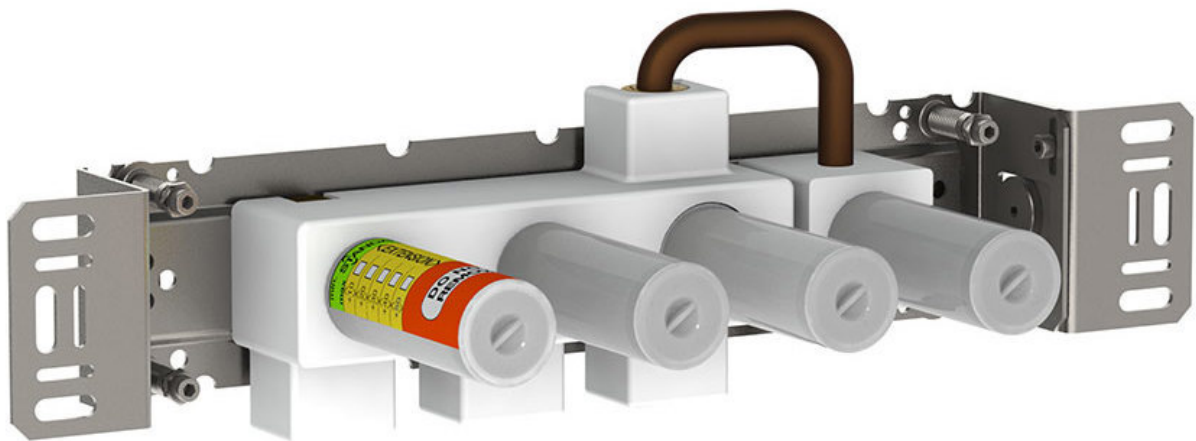
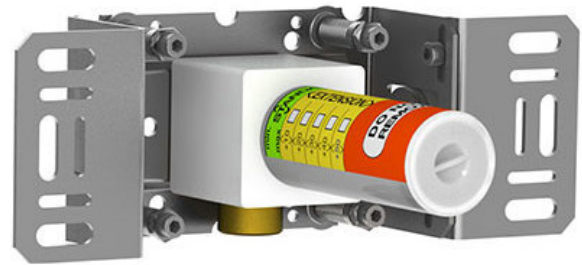


Date:

Client:

Project:

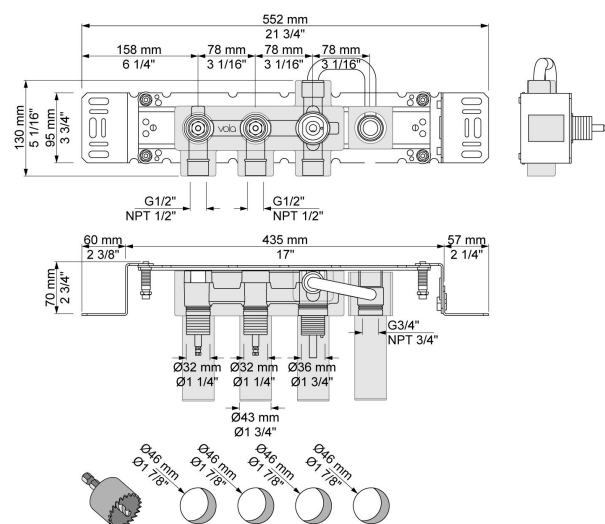


800T

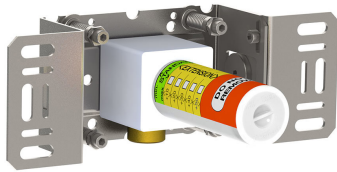
Two-handle build-in mixer with diverter, for bath filling and hand shower, with one fixed outlet socket and one separate outlet socket, 200M. ½" connection to copper, steel, iron or pex pipe work.

Flow

	Bar:	1.0	2.0	3.0	4.0	5.0
800T	(l/min)	19.6	27.8	34.0	39.3	43.9



Available in colors

**200M**

Separate outlet socket.

1/2" connection to copper, steel, iron or pex pipe work.

