

Date:

Client:

Project:

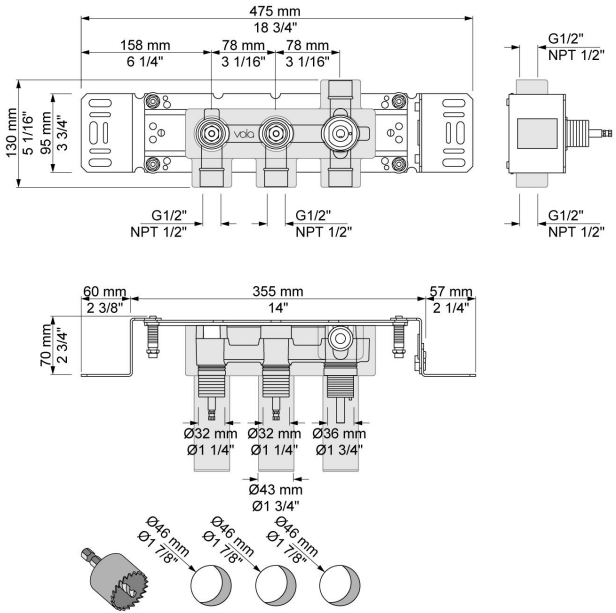


800

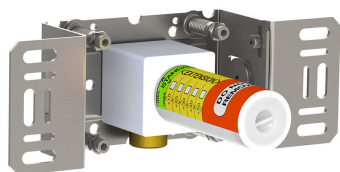
Two-handle build-in mixer with diverter, including two separate outlet sockets, 200M. 1/2" connection to copper, steel, iron or pex pipe work.

Flow

	Bar:	1.0	2.0	3.0	4.0	5.0
800	(l/min)	19.6	27.8	34.0	39.3	43.9



Available in colors

**200M**

Separate outlet socket.

1/2" connection to copper, steel, iron or pex pipe work.

