

	Date:
	Client:
	Project:



**RI  
SE**

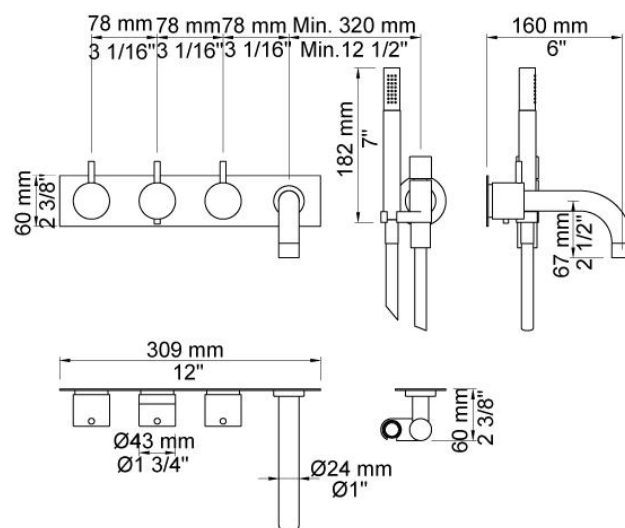


**5414C-071**

¾" thermostatic mixer. 5414C-071UP = Thermostatic mixer 5400T. 5414C-071AP = Handle NR51, handle NR52, handle NR64G, 160 mm fixed spout 010C, hand shower and hand shower holder with non-return valve 070, hose 1500 mm, four-hole plate 5004B.

**Flow**

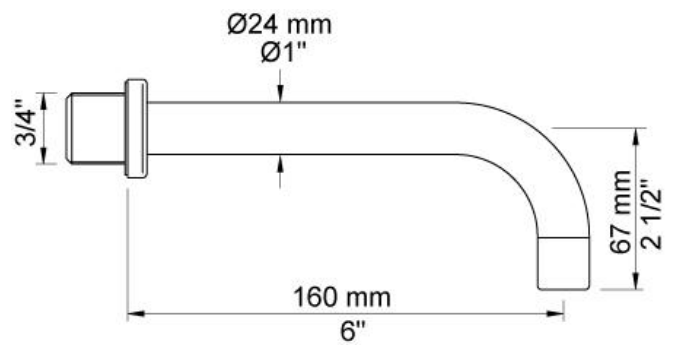
	Bar:	1.0	2.0	3.0	4.0	5.0
010C	(l/min)	15.0	21.2	26.0	30.0	30.0
070	(l/min)	5.2	7.3	9.0	9.0	9.0

**Available in colors**

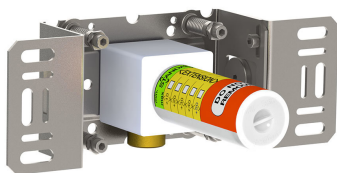
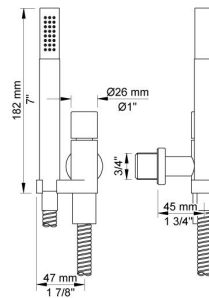
	Color 20, Brushed chrome
Color 02, Grey	Color 21, Carmine red
Color 04, Light blue	Color 25, Pink
Color 05, Orange	Color 27, Matt black
Color 06, Light green	Color 28, Matt white
Color 08, Yellow	Color 40, Brushed stainless steel
Color 09, Dark grey	Color 60, Black
Color 12, Mocca	Color 61, Brushed black
Color 14, Bright red	Color 63, Copper
Color 15, Dark blue	Color 64, Brushed Copper
Color 16, Polished chrome	Color 65, Gold
Color 17, Gloss black	Color 68, Silver
Color 18, White	Color 70, Brushed Gold
Color 19, Natural brass	

**010C**

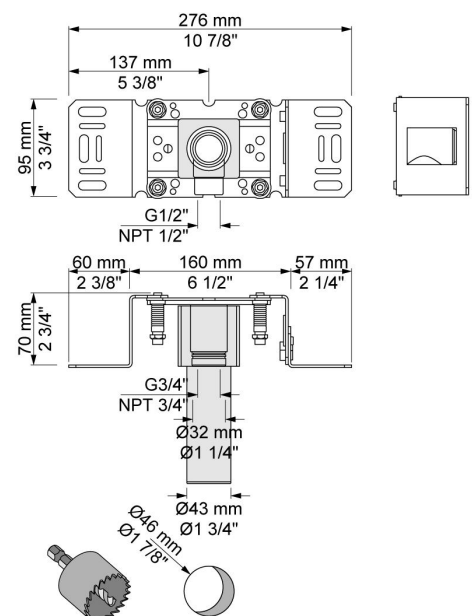
160 mm fixed spout for high flow.

**070**

Hand shower, hand shower holder and hose with non-return valve.

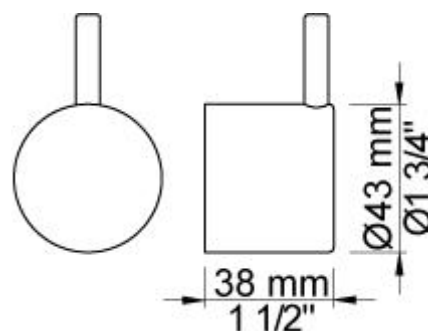
**200M**

Separate outlet socket.  
1/2" connection to copper, steel, iron or pex pipe work.





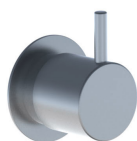
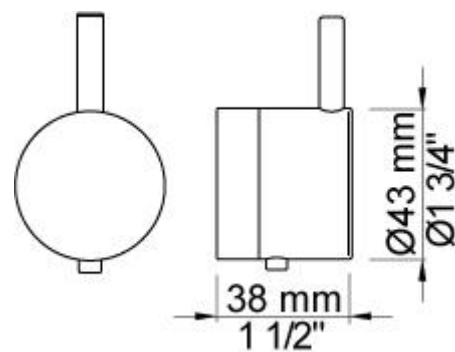
Technical drawing of a rectangular plate with four circular holes. The plate dimensions are 309 mm (12") wide and 60 mm (2 3/8") high. The holes are arranged in a row. The first three holes have a diameter of 39 mm (1 1/2") and are spaced 78 mm (3 1/8") apart. The fourth hole has a diameter of 30 mm (1 1/8") and is also 78 mm (3 1/8") from the third hole. The first hole is 78 mm (3 1/8") from the left edge.

**NR51**

On/off handle for series 5000.

**NR52**

Thermostatic handle for series 5000.

**NR64G**

Diverter handle for 5400/5600. With peg in the same colour as handle (Standard).

