

|  |          |
|--|----------|
|  | Date:    |
|  | Client:  |
|  | Project: |



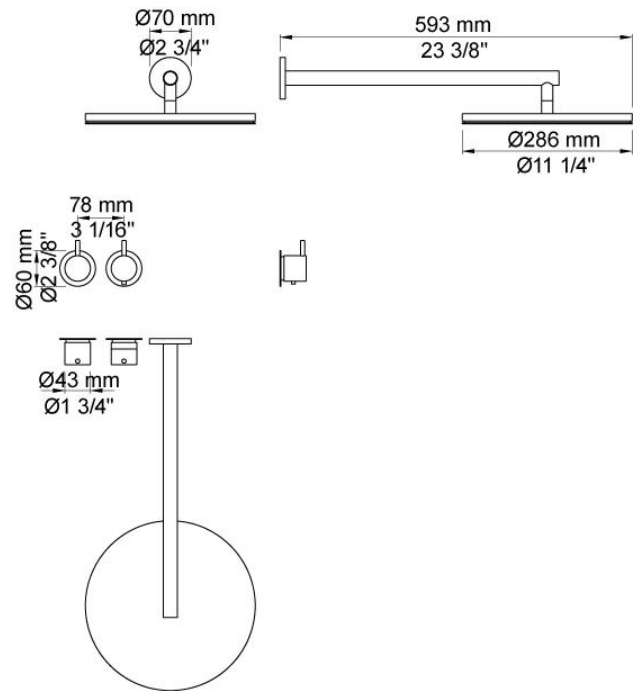
**5261**

¾" thermostatic mixer. 5261UP = Thermostatic mixer 5200V, 200M.  
 5261AP = Handle NR51, handle NR52, wall-mounted head shower 060, 2  
 pcs 60 mm circular flanges 2001.

**Flow**

|                    | Bar:    | 1.0  | 2.0  | 3.0  | 4.0  | 5.0  |
|--------------------|---------|------|------|------|------|------|
| 5261 <sup>1)</sup> | (l/min) | 12.7 | 18.0 | 22.0 | 25.4 | 28.4 |

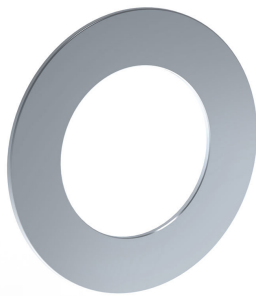
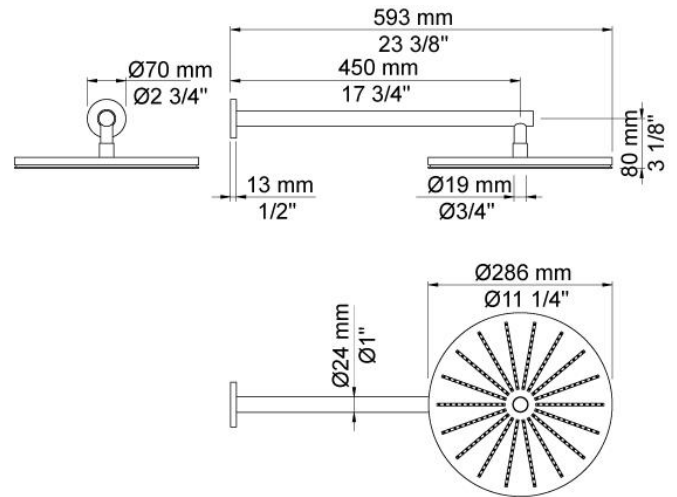
<sup>1)</sup> USA: Flow restricted to 1.8 gpm (7.0 l/min)

**Available in colors**

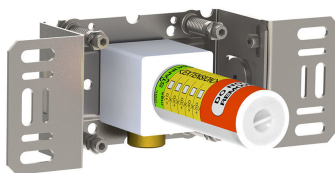
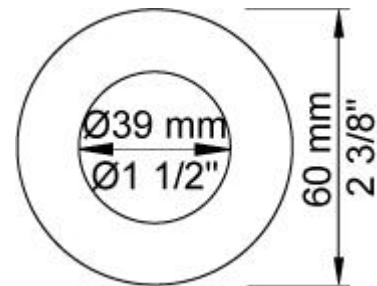
|                           |                                   |
|---------------------------|-----------------------------------|
|                           | Color 20, Brushed chrome          |
| Color 02, Grey            | Color 21, Carmine red             |
| Color 04, Light blue      | Color 25, Pink                    |
| Color 05, Orange          | Color 27, Matt black              |
| Color 06, Light green     | Color 28, Matt white              |
| Color 08, Yellow          | Color 40, Brushed stainless steel |
| Color 09, Dark grey       | Color 60, Black                   |
| Color 12, Mocca           | Color 61, Brushed black           |
| Color 14, Bright red      | Color 63, Copper                  |
| Color 15, Dark blue       | Color 64, Brushed Copper          |
| Color 16, Polished chrome | Color 65, Gold                    |
| Color 17, Gloss black     | Color 68, Silver                  |
| Color 18, White           | Color 70, Brushed Gold            |
| Color 19, Natural brass   |                                   |

**060**

Head shower, round, wall-mounted.

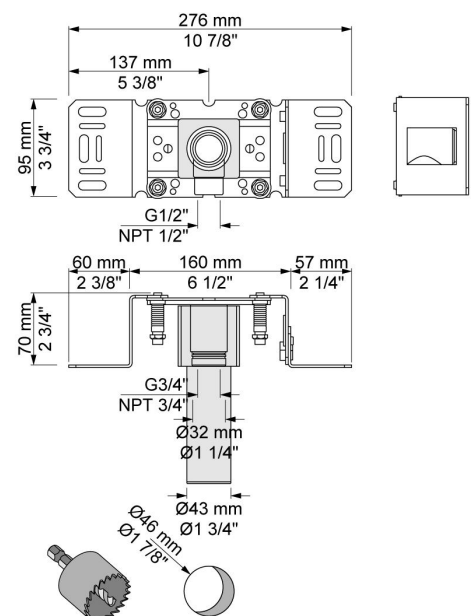
**2001**

60 mm circular flange. Hole Ø39 mm.

**200M**

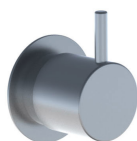
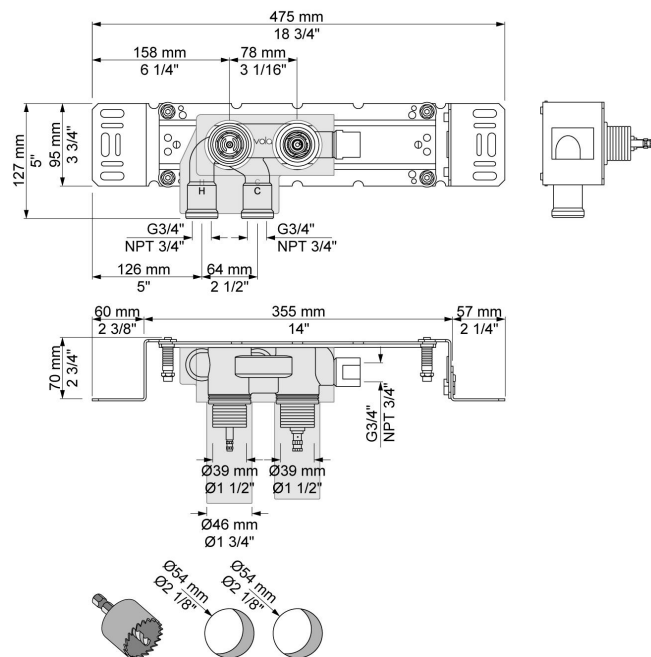
Separate outlet socket.

1/2" connection to copper, steel, iron or pex pipe work.

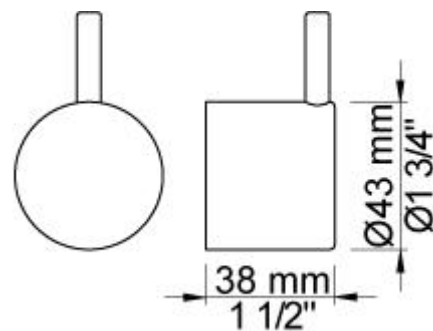


**5200V**

Thermostatic mixer without outlet socket.  $\frac{3}{4}$ " connection to copper, steel, iron or pex pipe work.

**NR51**

On/off handle for series 5000.

**NR52**

Thermostatic handle for series 5000.

