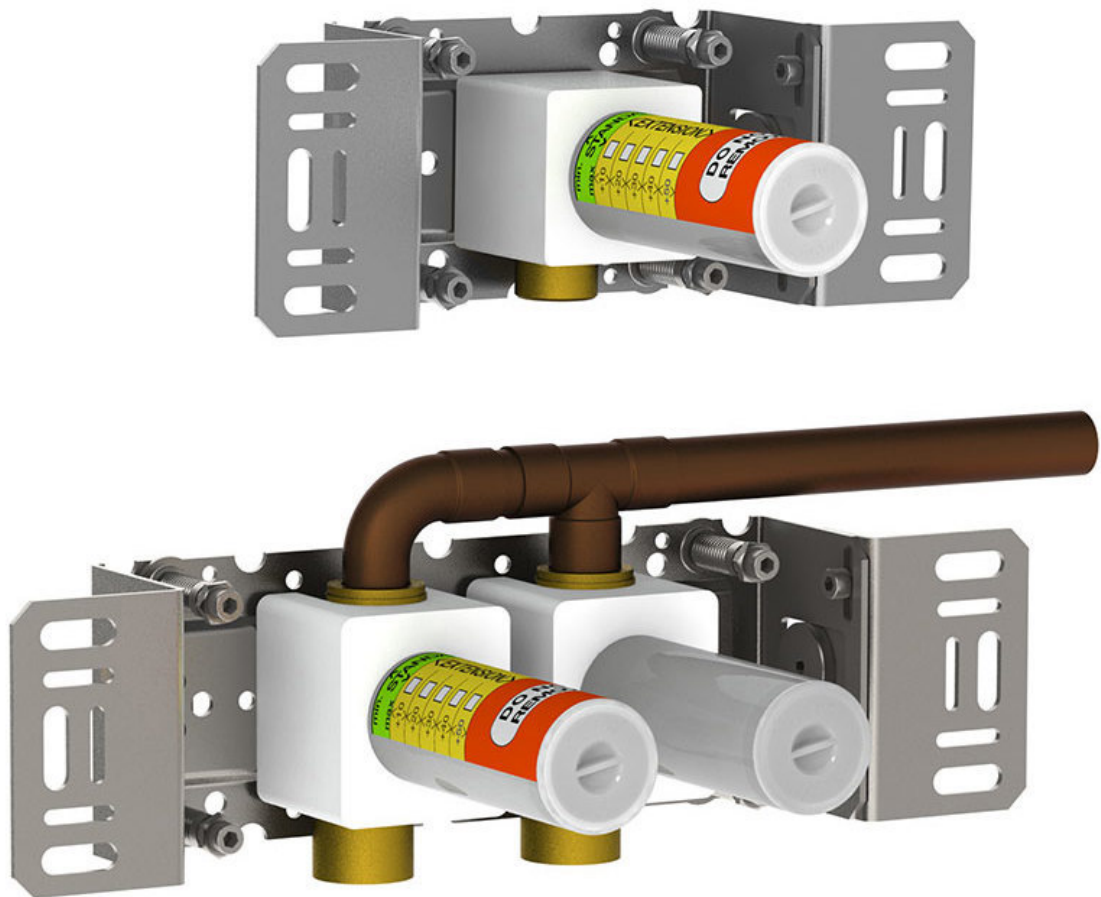


Date:

Client:

Project:

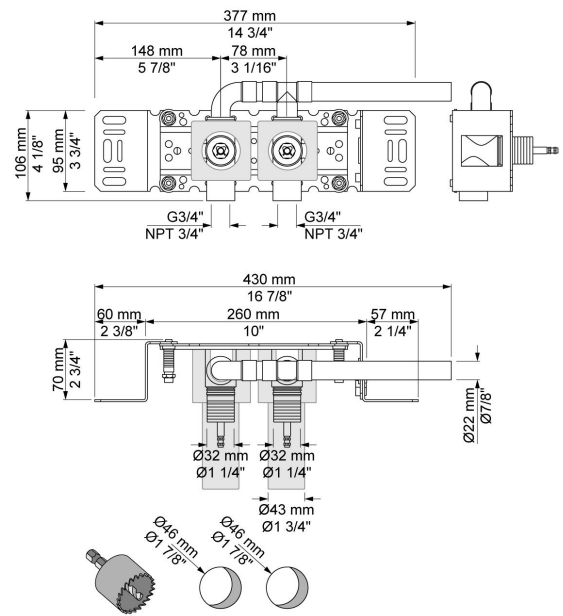


2700

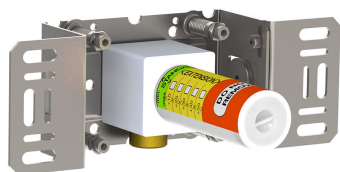
Two-handle build-in mixer for high flow, including separate outlet socket, 2700M. 3/4" connection to copper, steel or iron pipe work.

Flow

	Bar:	1.0	2.0	3.0	4.0	5.0
2700	(l/min)	37.5	53.1	65.0	75.1	83.9



Available in colors

**200M**

Separate outlet socket.

½" connection to copper, steel, iron or pex pipe work.

