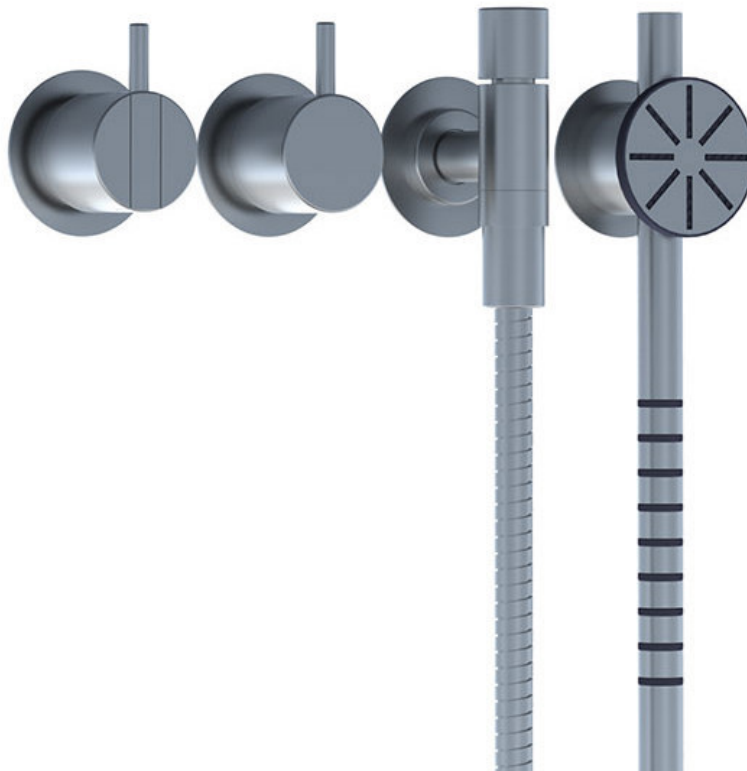


Date:

Client:

Project:



2471S-061A

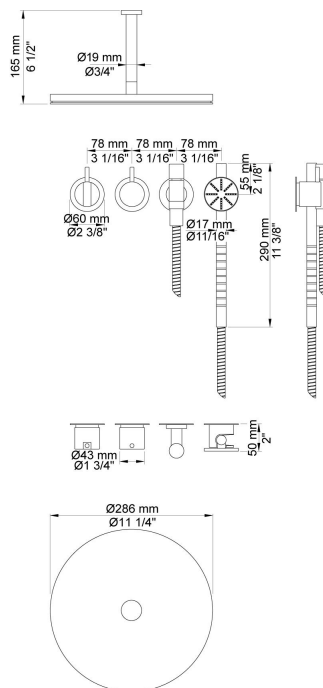
One-handle build-in mixer with ceramic disc technology with diverter. 2471S-061AUP = Mixer 2400N. 2471S-061AAP = Handle NR21, handle NR24G, hand shower and hand shower holder with non-return valve 070S, hose 1500 mm, ceiling-mounted head shower 060A, 60 mm circular flanges: 2 pcs. 001G, 001, 2001.

Flow

| | Bar: | 1.0 | 2.0 | 3.0 | 4.0 | 5.0 |
|--------------------|---------|------|------|------|------|------|
| 070S ¹⁾ | (l/min) | 6.9 | 9.8 | 12.0 | 13.9 | 15.5 |
| 060A ²⁾ | (l/min) | 11.6 | 16.3 | 20.0 | 23.1 | 25.8 |

¹⁾ USA: Flow restricted to 2.0 gpm (7.6 l/min)

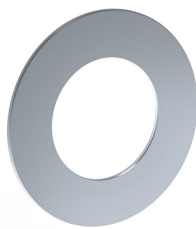
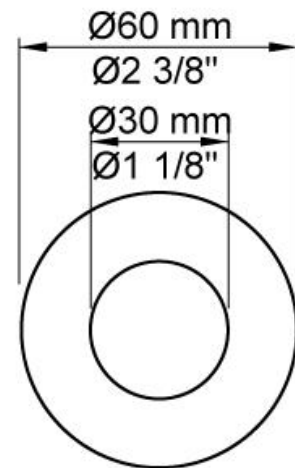
²⁾ USA: Flow restricted to 1.8 gpm (7.0 l/min)

**Available in colors**

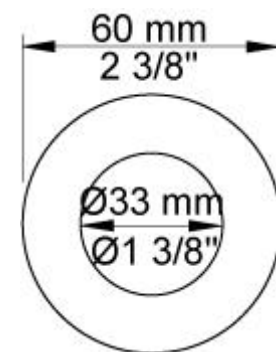
| | |
|---------------------------|-----------------------------------|
| | Color 20, Brushed chrome |
| Color 02, Grey | Color 21, Carmine red |
| Color 04, Light blue | Color 25, Pink |
| Color 05, Orange | Color 27, Matt black |
| Color 06, Light green | Color 28, Matt white |
| Color 08, Yellow | Color 40, Brushed stainless steel |
| Color 09, Dark grey | Color 60, Black |
| Color 12, Mocca | Color 61, Brushed black |
| Color 14, Bright red | Color 63, Copper |
| Color 15, Dark blue | Color 64, Brushed Copper |
| Color 16, Polished chrome | Color 65, Gold |
| Color 17, Gloss black | Color 68, Silver |
| Color 18, White | Color 70, Brushed Gold |
| Color 19, Natural brass | |

**001**

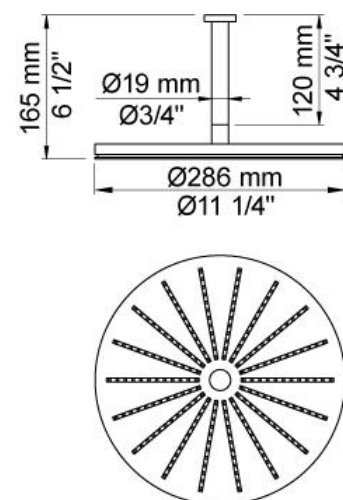
60 mm circular flange. Hole Ø30 mm.

**001G**

60 mm circular flange. Hole Ø33 mm.

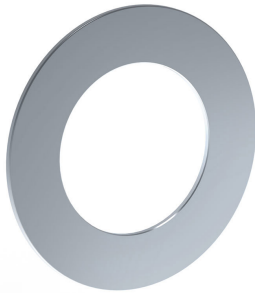
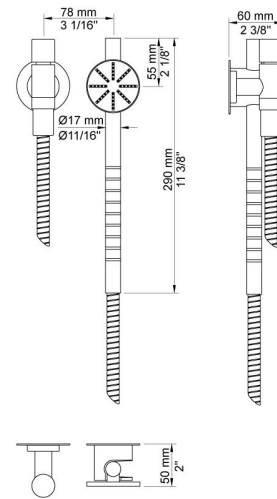
**060A**

Head shower, round, ceiling-mounted. 60 mm cover flange included.

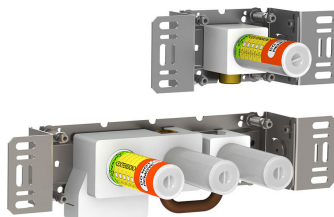
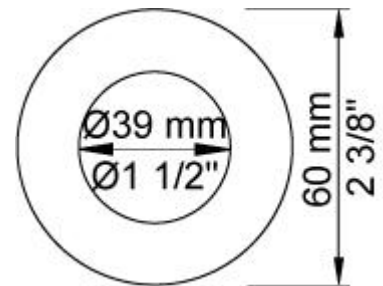


**070S**

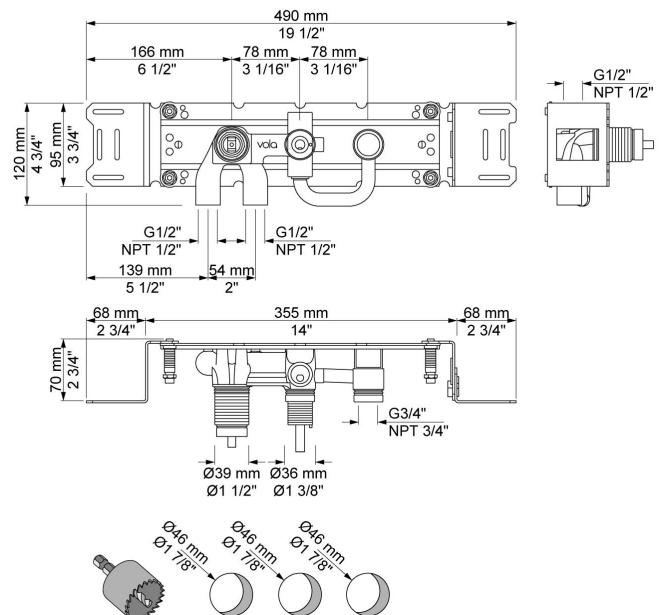
Hand shower, hand shower holder and hose with non-return valve.

**2001**

60 mm circular flange. Hole Ø39 mm.

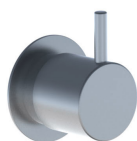
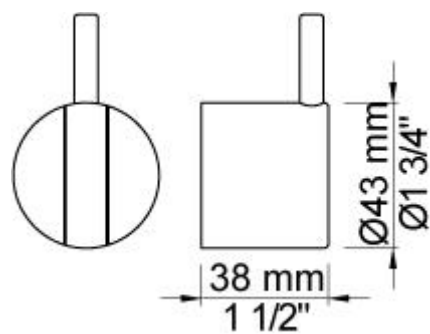
**2400N**

One-handle build-in mixer for high flow, with diverter, with one fixed outlet socket, and one separate outlet socket, 200M. 1/2" connection to copper, steel, iron or pex pipe work.



**NR21**

Operating handle for 2100, 2200, 2300, 2400 incl. variants. Ø43 mm.

**NR24G**

Diverter handle for 2400 incl. variants. Ø43 mm. With peg in the same colour as handle (Standard).

