

Date:

Client:

Project:

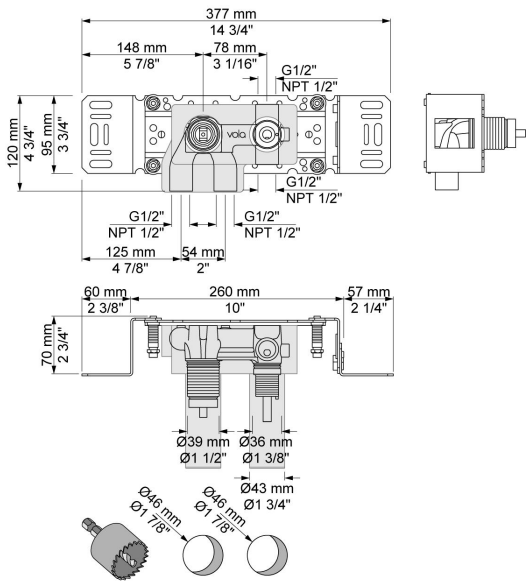


**2400V**

One-handle build-in mixer for high flow, with diverter. 1/2" connection to copper, steel, iron or pex pipe work.

**Flow**

	Bar:	1.0	2.0	3.0	4.0	5.0
2400V	(l/min)	12.7	18.0	22.0	25.4	28.4



**Available in colors**