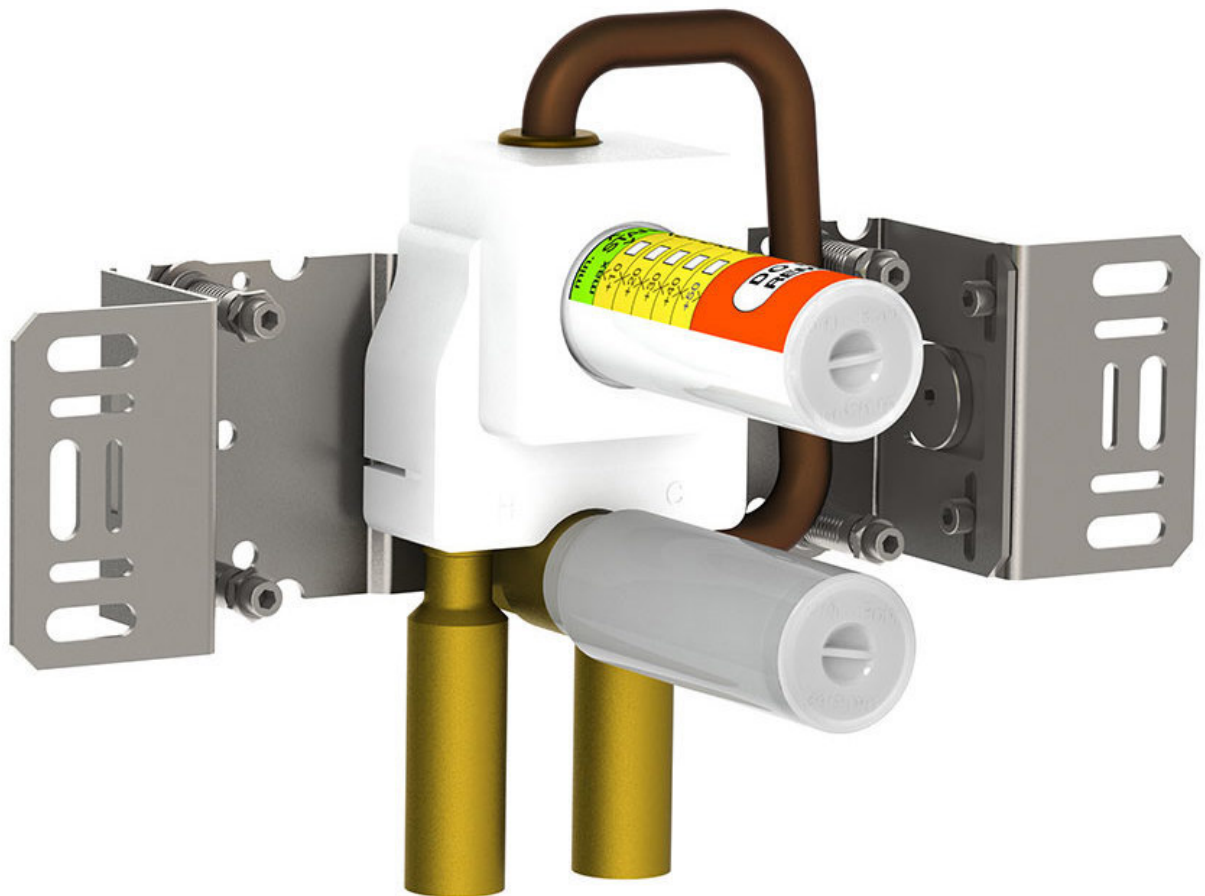


Date:

Client:

Project:

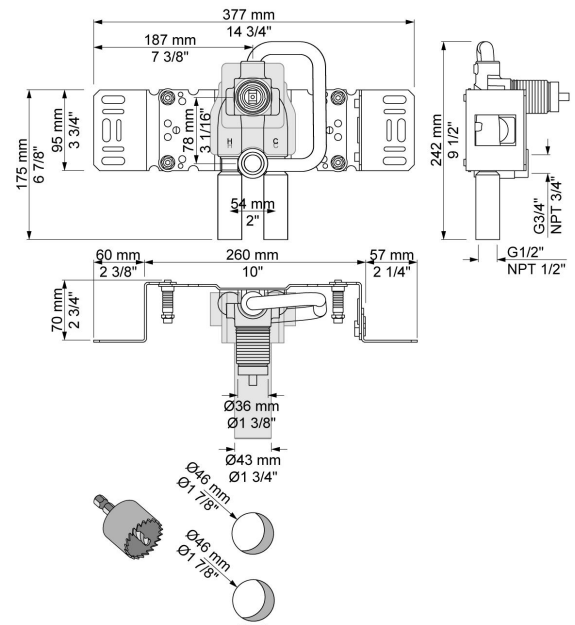


**2300**

One-handle build-in mixer for high flow, for vertical installation. ½" connection to copper, steel, iron or pex pipe work.

**Flow**

	<b>Bar:</b>	<b>1.0</b>	<b>2.0</b>	<b>3.0</b>	<b>4.0</b>	<b>5.0</b>
2300	(l/min)	14.4	20.4	25.0	28.9	32.3

**Available in colors**

	Color 64, Brushed Copper
Color 60, Black	Color 65, Gold
Color 61, Brushed black	Color 68, Silver
Color 63, Copper	Color 70, Brushed Gold