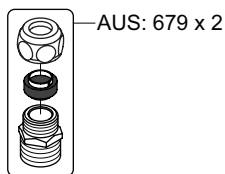
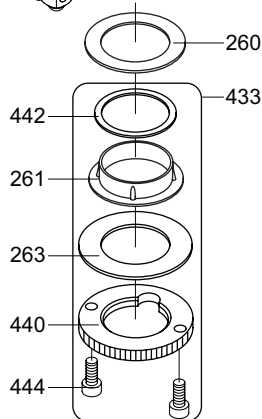
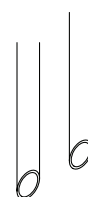


- 2 mm



HV1: Ø10  
 HV1JP: Ø10  
 HV1US: Ø3/8"  
 HV1Q: Ø3/8"



- VR277K: VR22, VR269, VR277
- \*VR17L4K: VR15P, VR16L4, VR17L (US-Standard)
- \*VR17L5K: VR15P, VR16L5, VR17L (Standard)
- \*VR17L9K: VR15P, VR16L9, VR17L (Japan Standard)
- \*VR17LSK: VR15P, VR16LS, VR17L
- VR297/L/M: VR20, VR22, VR269, VR273/L/M, VR277, VR294, VR295, VR296
- VR433: VR261, VR263, VR440, VR442, 2xVR444
- NR.10/L/M: VR20, VR22, VR273/L/M, VR294, VR295



**vola**  
 Lunavej 2  
 DK-8700 Horsens  
 Tlf : + 45 7023 5500  
 sales@vola.com  
 www.vola.com

**HV3 Family:**

HV3: 150, +30, +30/150, +170, +170/150  
 HV3L: 150, +30, +30/150, +170, +170/150  
 HV3M: 150, +30, +30/150, +170, +170/150

Date  
 Jan. 23

Rev.  
 3

Sheet  
 SB 23.1