

Date:

Client:

Project:



KV1M-500MT1

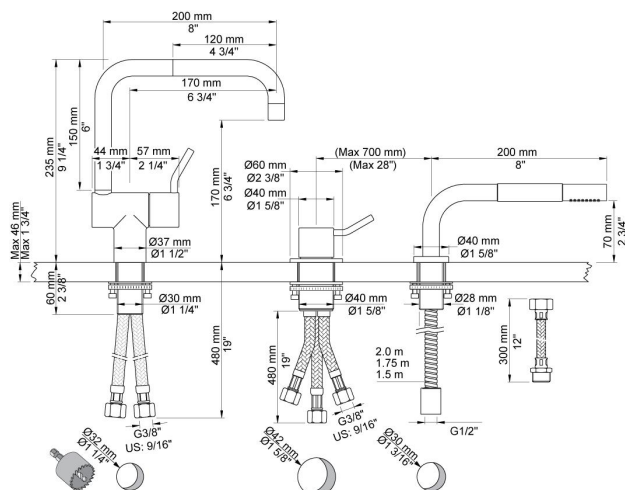
One-handle mixer with medium lever and ceramic disc technology, double swivel spout and water saving aerator, with one-handle mixer 500 with medium lever and hand shower T1.

Ada approved.

Flow

| | Bar: | 1.0 | 2.0 | 3.0 | 4.0 | 5.0 |
|--------------------|---------|-----|-----|------|------|------|
| KV1M | (l/min) | 4.8 | 6.8 | 8.3 | 8.3 | 8.3 |
| KV1M ¹⁾ | (l/min) | 2.6 | 3.7 | 4.5 | 4.5 | 4.5 |
| T1 | (l/min) | 6.3 | 9.0 | 11.0 | 12.7 | 14.2 |

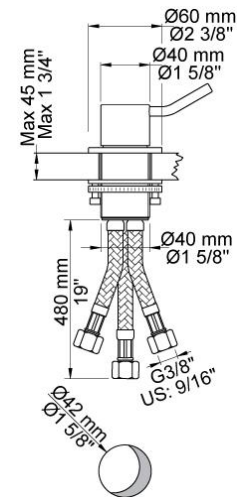
¹⁾ US standard

**Available in colors**

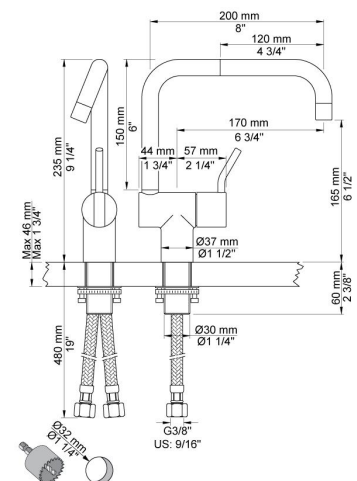
| | |
|---------------------------|-----------------------------------|
| | Color 20, Brushed chrome |
| Color 02, Grey | Color 21, Carmine red |
| Color 04, Light blue | Color 25, Pink |
| Color 05, Orange | Color 27, Matt black |
| Color 06, Light green | Color 28, Matt white |
| Color 08, Yellow | Color 40, Brushed stainless steel |
| Color 09, Dark grey | Color 60, Black |
| Color 12, Mocca | Color 61, Brushed black |
| Color 14, Bright red | Color 63, Copper |
| Color 15, Dark blue | Color 64, Brushed Copper |
| Color 16, Polished chrome | Color 65, Gold |
| Color 17, Gloss black | Color 68, Silver |
| Color 18, White | Color 70, Brushed Gold |
| Color 19, Natural brass | |

**500M**

One-handle table-mounted mixer with medium lever.

**KV1M**

One-handle mixer with ceramic disc technology, medium lever and double swivel spout and water saving aerator. Height 235 mm. Pipe size: 3/8". Hole cut out size: 32 mm.

**T1**

Deck mounted pull out hand shower, with hose. Work top: Max. 45 mm. Hole cut out size: 30 mm.

