

Date:

Client:

Project:



**FS3**

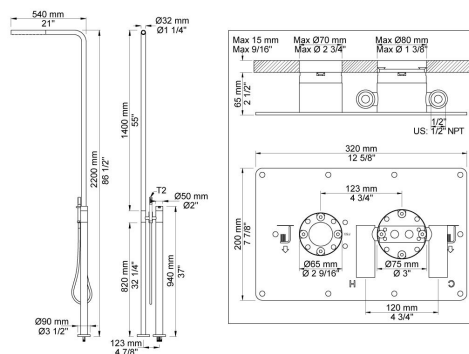
Free-standing thermostatic shower with hand shower.FS3UP = Build-in part for free-standing shower with hand shower.FS3AP = Trim part for free-standing thermostatic shower with hand shower. When installed outdoor the FS3 must be removed when temperature drops below the freezing point of water 0°C/32°F. Store dry and free of frost.If the floor covering is greater than 15 mm, extensions should be specified when ordering the FS3.All extensions supplied with the FS3 are free of charge.

**Flow**

	Bar:	1.0	2.0	3.0	4.0	5.0
FS3 <sup>1)</sup>	(l/min)	7.5	10.6	13.0	15.0	16.8
FS3 <sup>2)</sup>	(l/min)	5.2	7.3	9.0	9.0	9.0

<sup>1)</sup> USA: Flow restricted to 1.8 gpm (7.0 l/min)

<sup>2)</sup> T2 (USA: Flow restricted to 1.8 gpm (7.0 l/min))

**Available in colors**

	Color 20, Brushed chrome
Color 02, Grey	Color 21, Carmine red
Color 04, Light blue	Color 25, Pink
Color 05, Orange	Color 27, Matt black
Color 06, Light green	Color 28, Matt white
Color 08, Yellow	Color 40, Brushed stainless steel
Color 09, Dark grey	Color 60, Black
Color 12, Mocca	Color 61, Brushed black
Color 14, Bright red	Color 63, Copper
Color 15, Dark blue	Color 64, Brushed Copper
Color 16, Polished chrome	Color 65, Gold
Color 17, Gloss black	Color 68, Silver
Color 18, White	Color 70, Brushed Gold
Color 19, Natural brass	