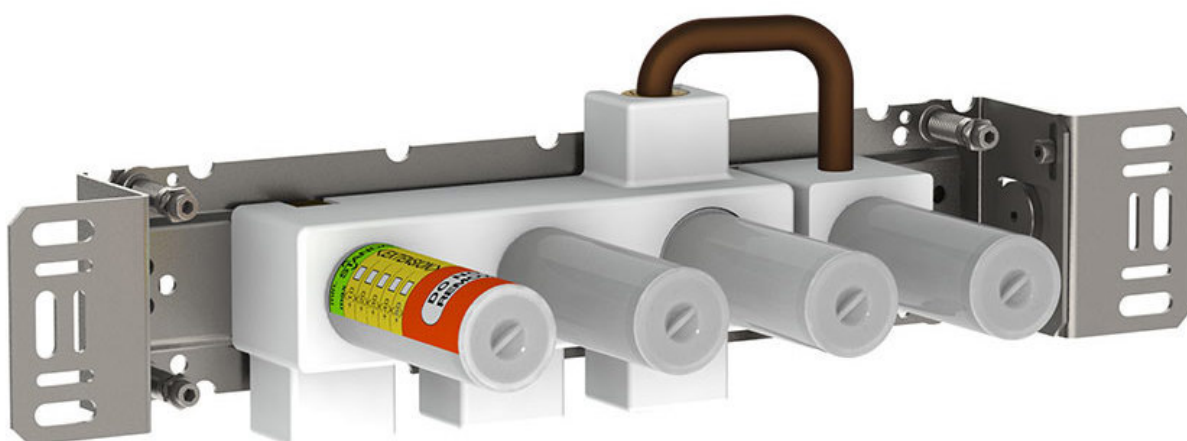
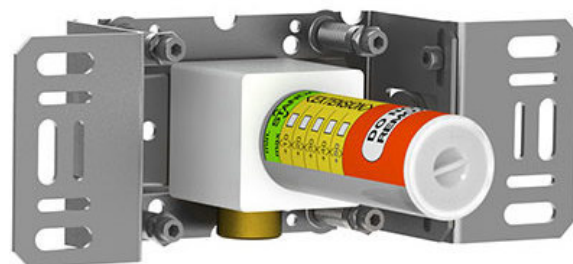


Date:

Client:

Project:

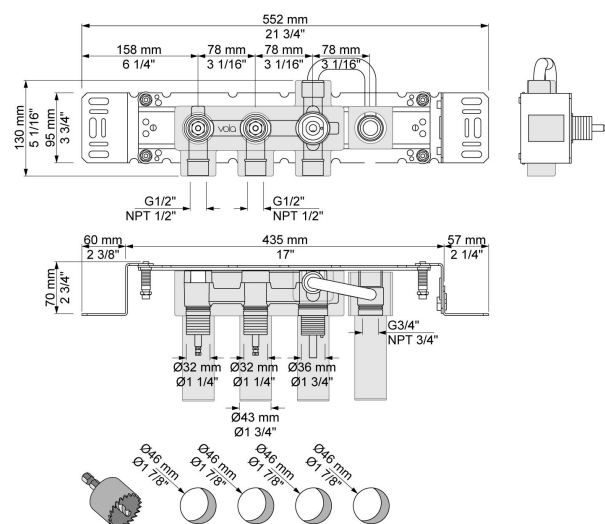


800T

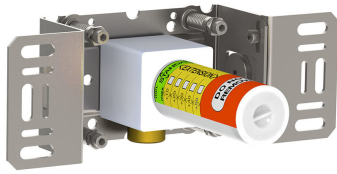
Two-handle build-in mixer with diverter, for bath filling and hand shower, with one fixed outlet socket and one separate outlet socket, 200M. ½" connection to copper, steel, iron or pex pipe work.

Flow

| | Bar: | 1.0 | 2.0 | 3.0 | 4.0 | 5.0 |
|------|-------------|------------|------------|------------|------------|------------|
| 800T | (l/min) | 19.6 | 27.8 | 34.0 | 39.3 | 43.9 |



Available in colors

**200M**

Separate outlet socket.

1/2" connection to copper, steel, iron or pex pipe work.

