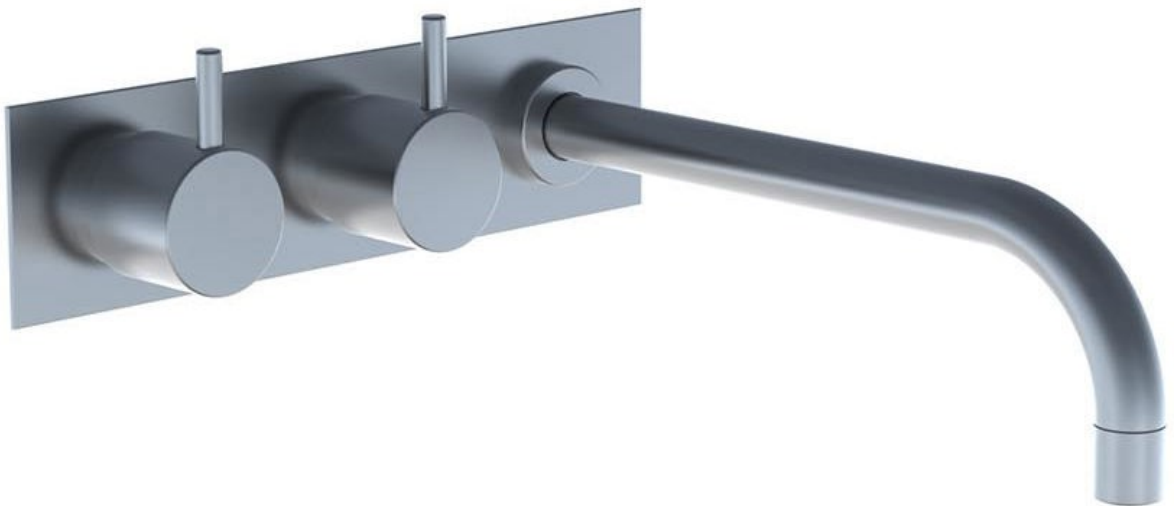


	Date:
	Client:
	Project:

**RI
SE****WRAS**
APPROVED
PRODUCT

623K

Two-handle build-in mixer with ¼ turn ceramic disc technology.

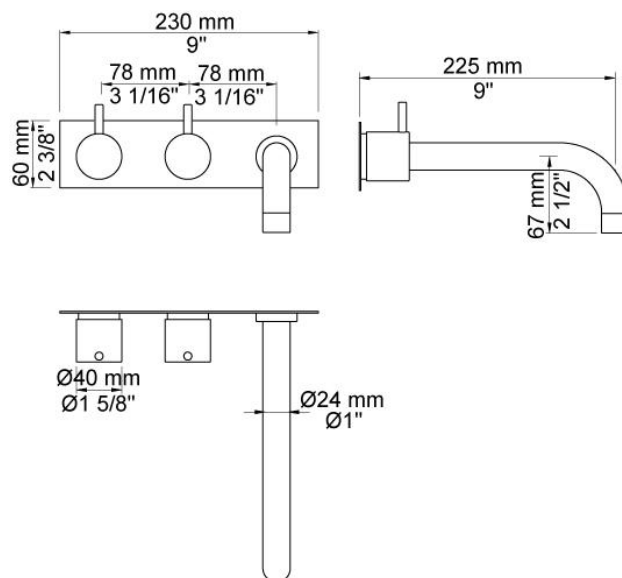
623KUP = Mixer 600.

623KAP = 2 pcs. handles NR17, 225 mm fixed spout 020, three-hole plate 60 x 230 mm 003K.

Flow

	Bar:	1.0	2.0	3.0	4.0	5.0
623K	(l/min)	2.9	4.1	5.0	5.0	5.0
623K ¹⁾	(l/min)	2.6	3.7	4.5	4.5	4.5

¹⁾ USA standard

**Available in colors**

	Color 20, Brushed chrome
Color 02, Grey	Color 21, Carmine red
Color 04, Light blue	Color 25, Pink
Color 05, Orange	Color 27, Matt black
Color 06, Light green	Color 28, Matt white
Color 08, Yellow	Color 40, Brushed stainless steel
Color 09, Dark grey	Color 60, Black
Color 12, Mocca	Color 61, Brushed black
Color 14, Bright red	Color 63, Copper
Color 15, Dark blue	Color 64, Brushed Copper
Color 16, Polished chrome	Color 65, Gold
Color 17, Gloss black	Color 68, Silver
Color 18, White	Color 70, Brushed Gold
Color 19, Natural brass	



Technical drawing of a three-hole plate. The overall width is 231 mm (9"). The overall height is 60 mm (2 3/8"). The distance between the centers of the holes is 78 mm (3 1/8"). The hole diameters are Ø33 mm (Ø1 3/8") for the first two holes and Ø30 mm (Ø1 1/8") for the third hole. The plate has a rectangular shape with rounded corners.



Technical drawing of a bent metal rod. The rod has a diameter of $\varnothing 19 \text{ mm}$ ($\varnothing 3/4''$). The total length of the rod is 225 mm ($9''$). The rod is bent at a 90-degree angle. The vertical section has a height of 67 mm ($2 \frac{1}{2}''$). The horizontal section has a length of 158 mm ($6 \frac{1}{4}''$). The rod is attached to a base with a height of $3/4''$.

[illegible]

**NR17**

Operating handle for 600, 700, 800, 900, 1500, 2800, 2900, S20, S21, S40, S42 incl. variants. Ø40 mm.

