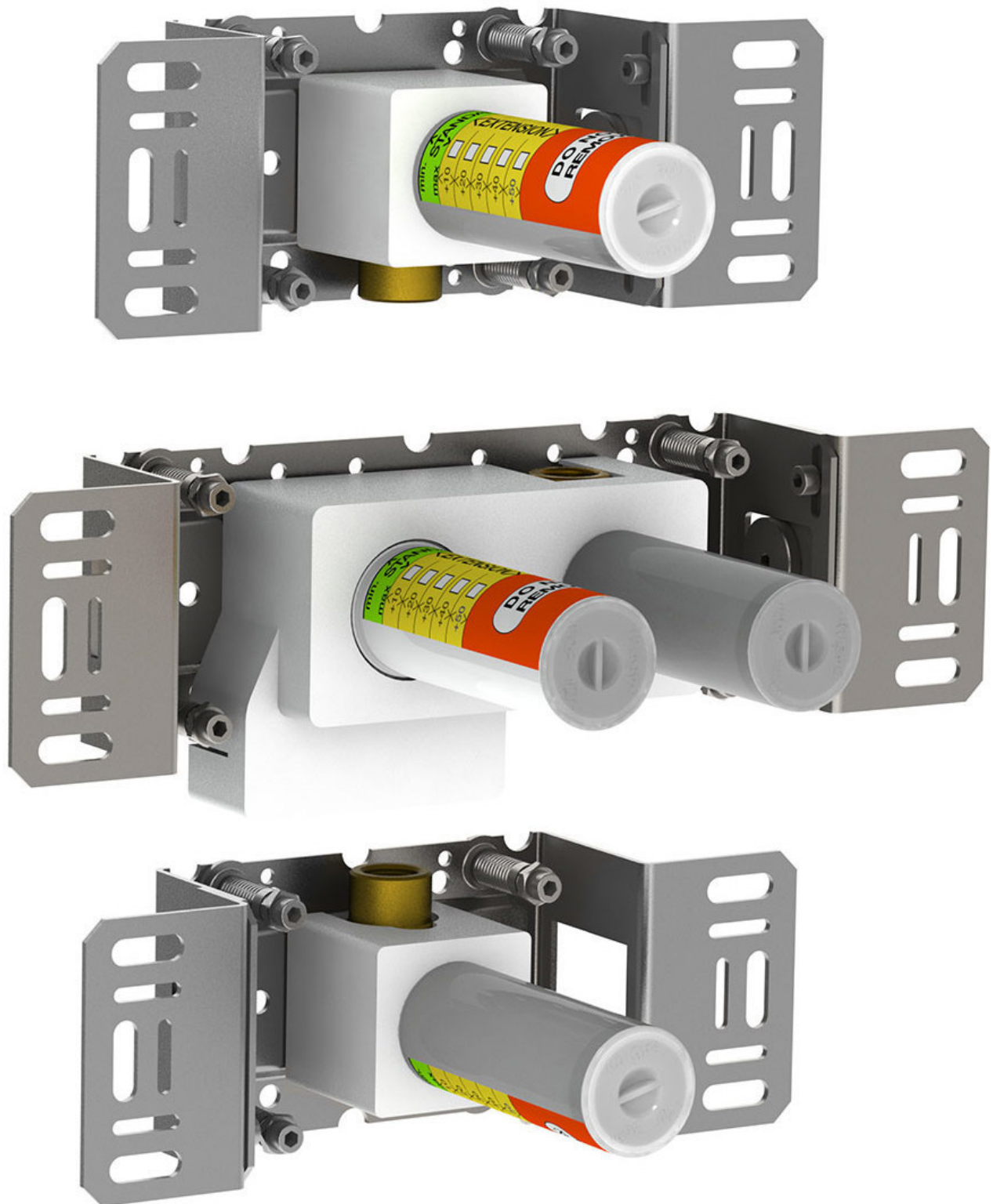


Date:

Client:

Project:

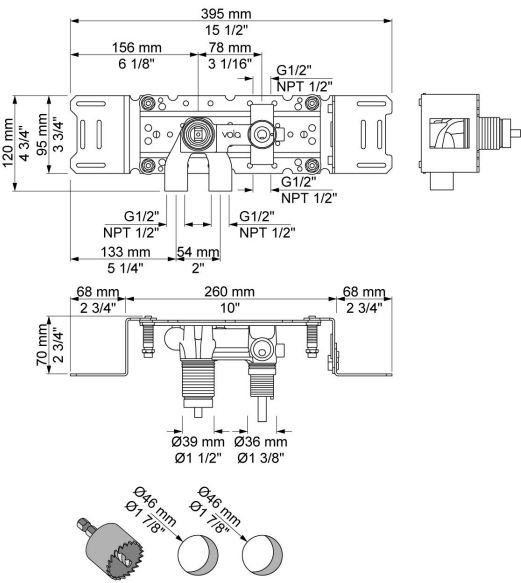


2400

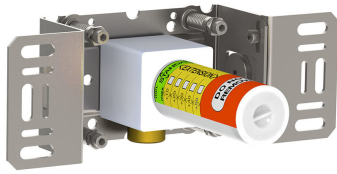
One-handle build-in mixer for high flow, with diverter, including two separate outlet sockets, 200M. ½" connection to copper, steel, iron or pex pipe work.

Flow

|      | Bar:    | 1.0  | 2.0  | 3.0  | 4.0  | 5.0  |
|------|---------|------|------|------|------|------|
| 2400 | (l/min) | 12.7 | 18.0 | 22.0 | 25.4 | 28.4 |



Available in colors

**200M**

Separate outlet socket.

½" connection to copper, steel, iron or pex pipe work.

